

AERIAL HK MACHINE

NO. 9016



Straight from the iconic sci-fi masterpiece “T2: Judgement Day” comes the menacing Aerial Hunter Killer model kit! With its striking futuristic design and lethal capability, it raised the bar for science fiction machines and has been a long time fan favorite.

“The future is not set. There is no fate but what we make for ourselves”

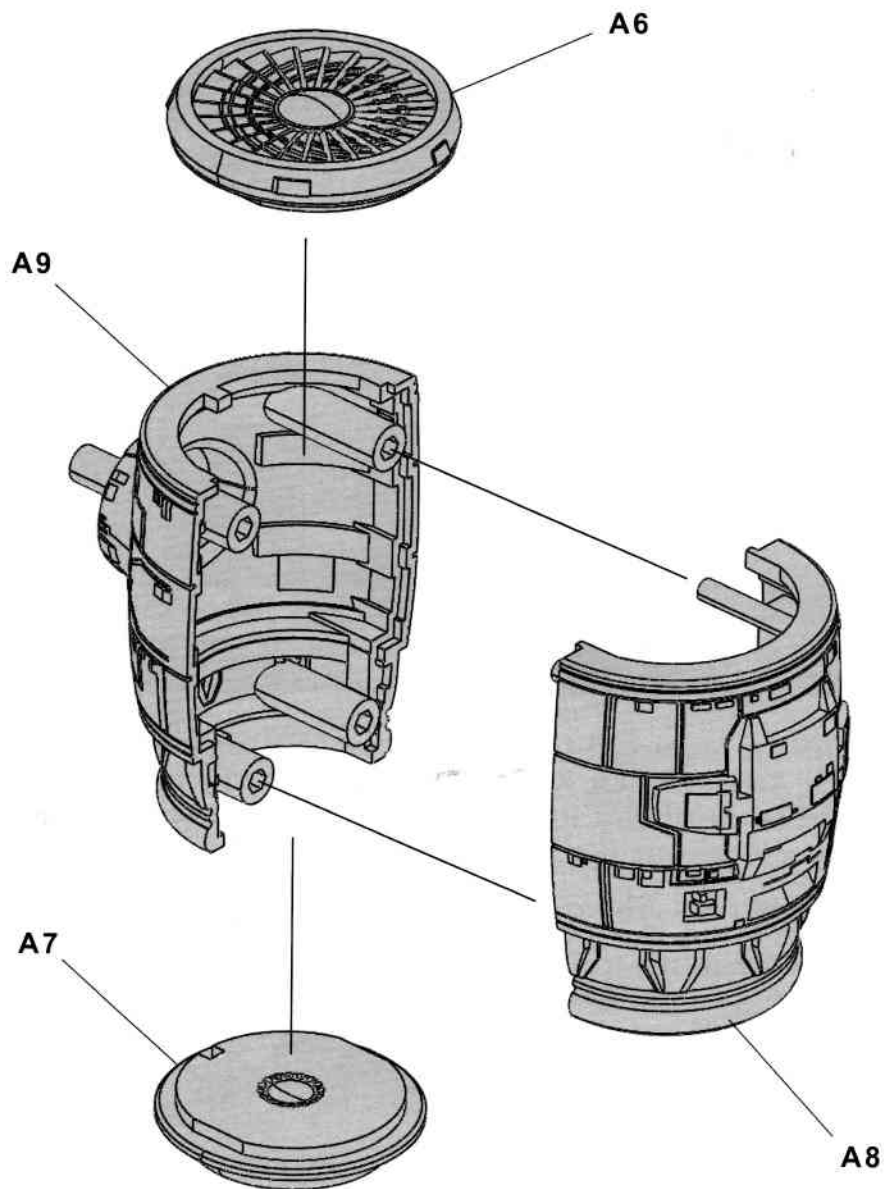
Machines have taken control of the planet. Humans have been targeted for termination. The future of mankind rests with the resistance fighters. Made up of Soldiers and the remaining human survivors, the resistance fights for mans survival.

STUDIOCANAL

Terminator 2: Judgment Day, T2, THE TERMINATOR, ENDOSKELETON, and any depiction of Endoskeleton are trademarks of Studiocanal S.A. All Rights Reserved.
©2013 StudioCanal S.A. ©All Rights Reserved

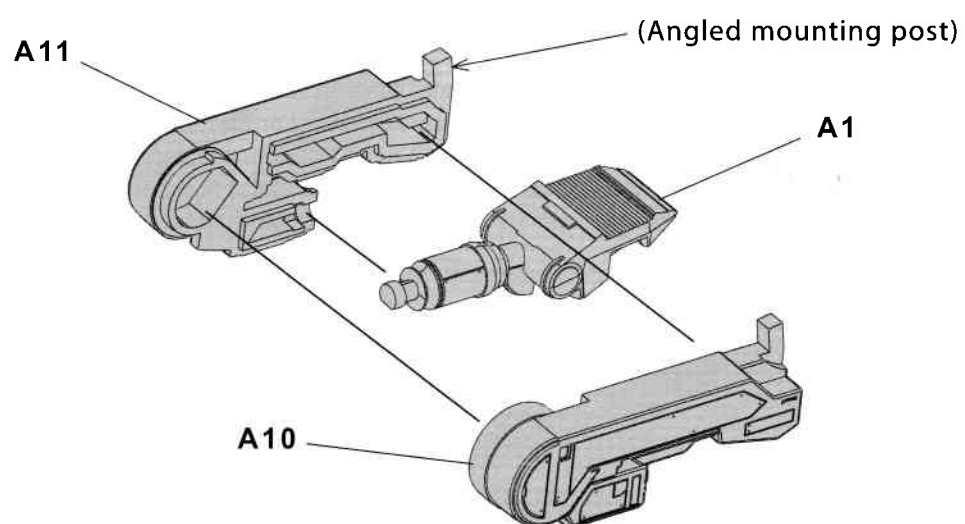
1

Engine pod assembly (2X required)



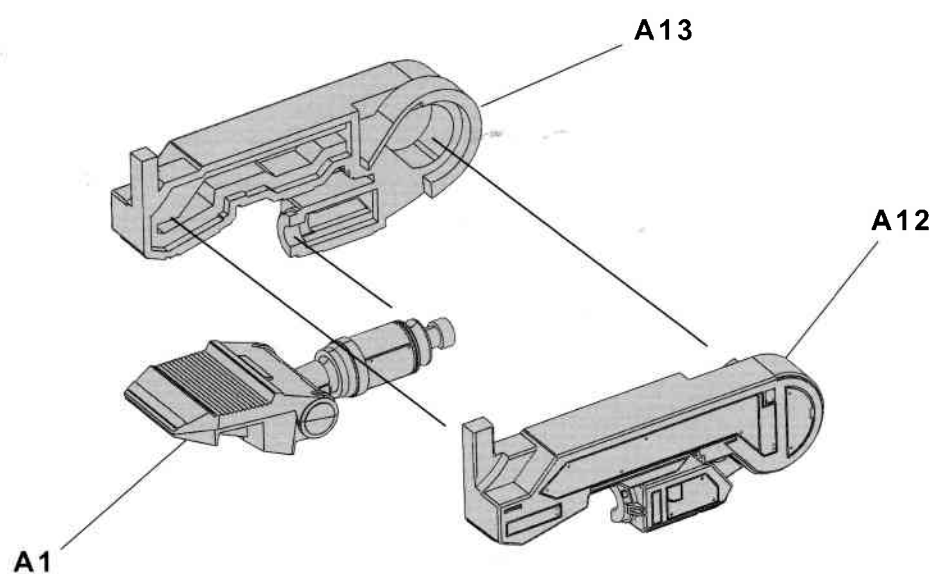
2

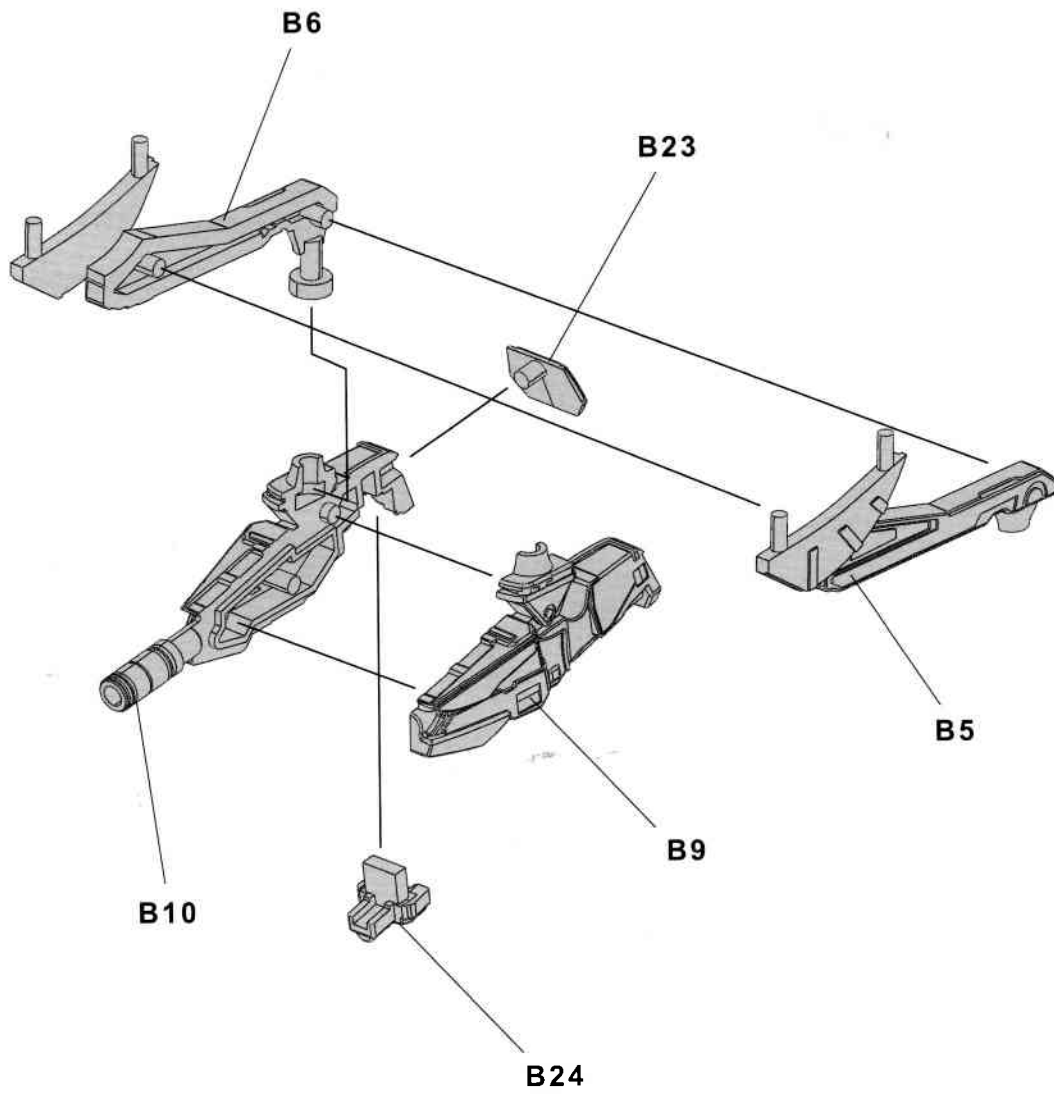
Arm assembly - Front (2X required)

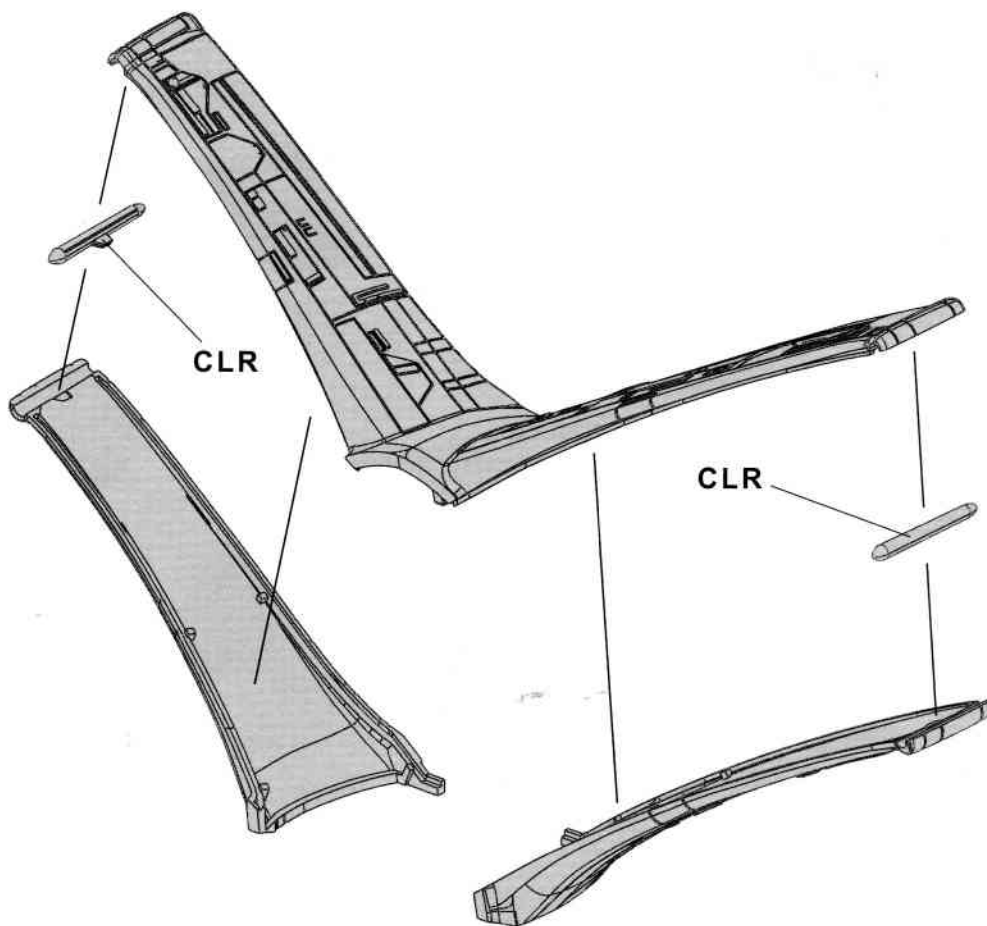


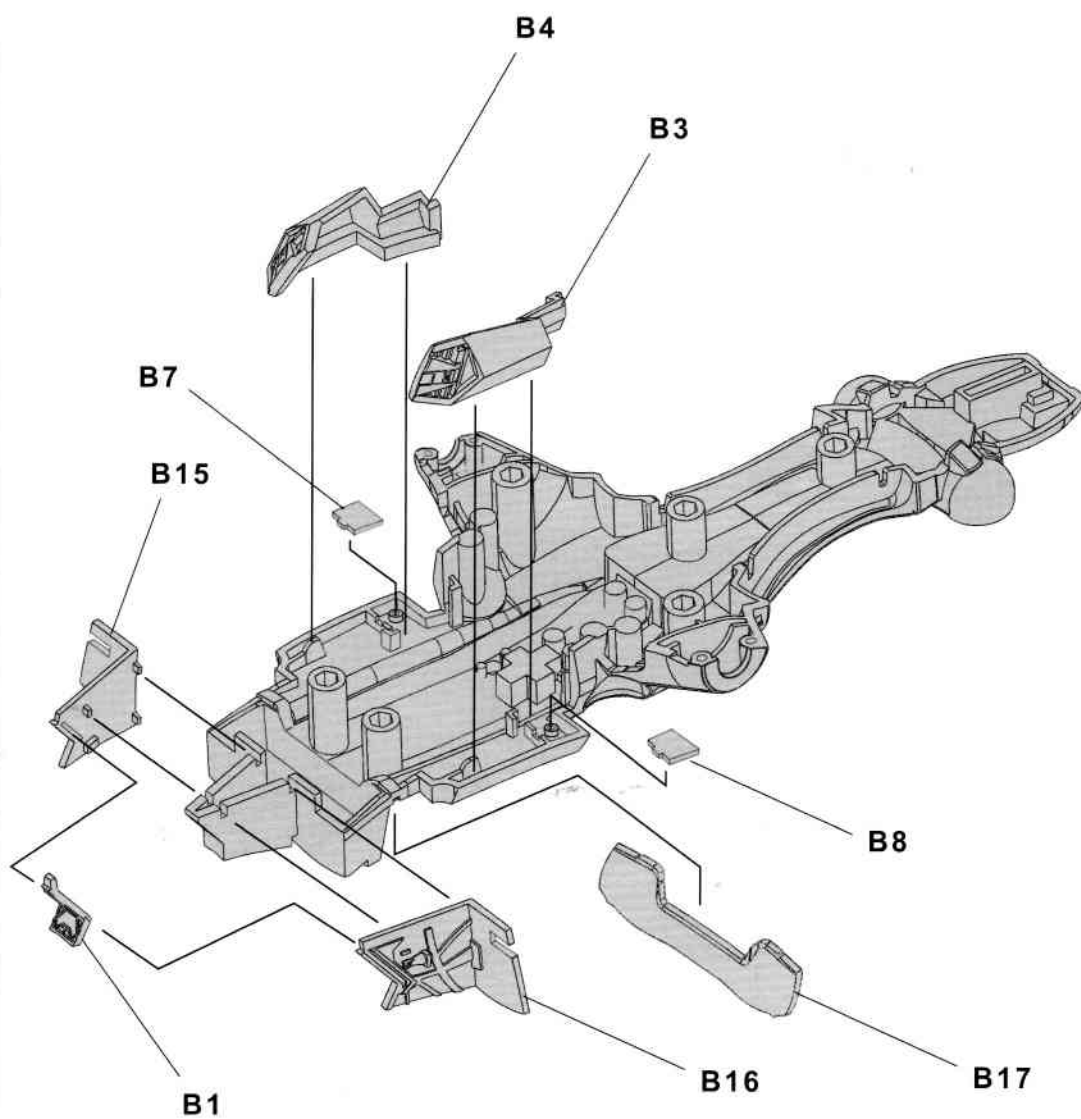
3

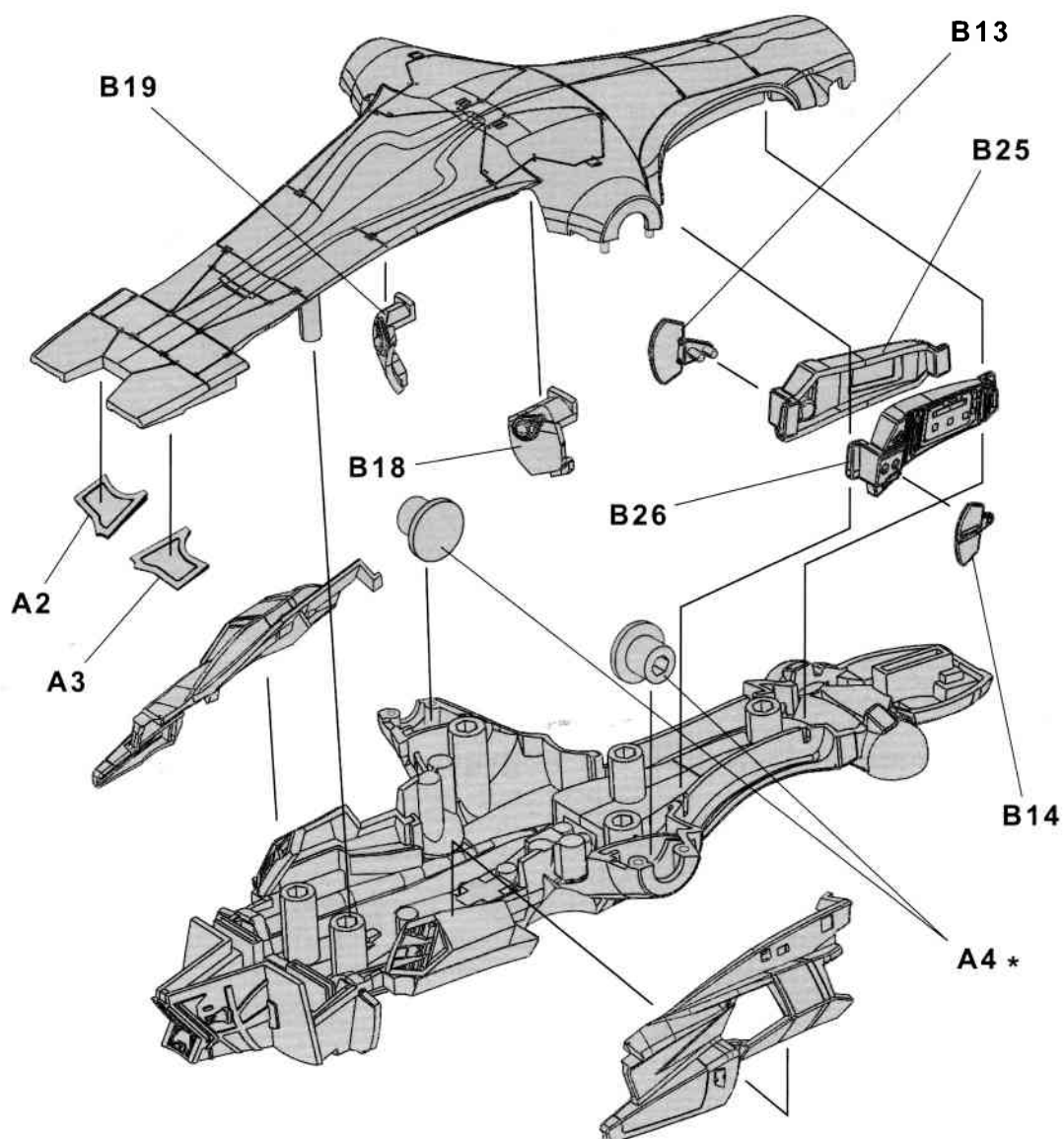
Arm assembly - Rear (2X required)



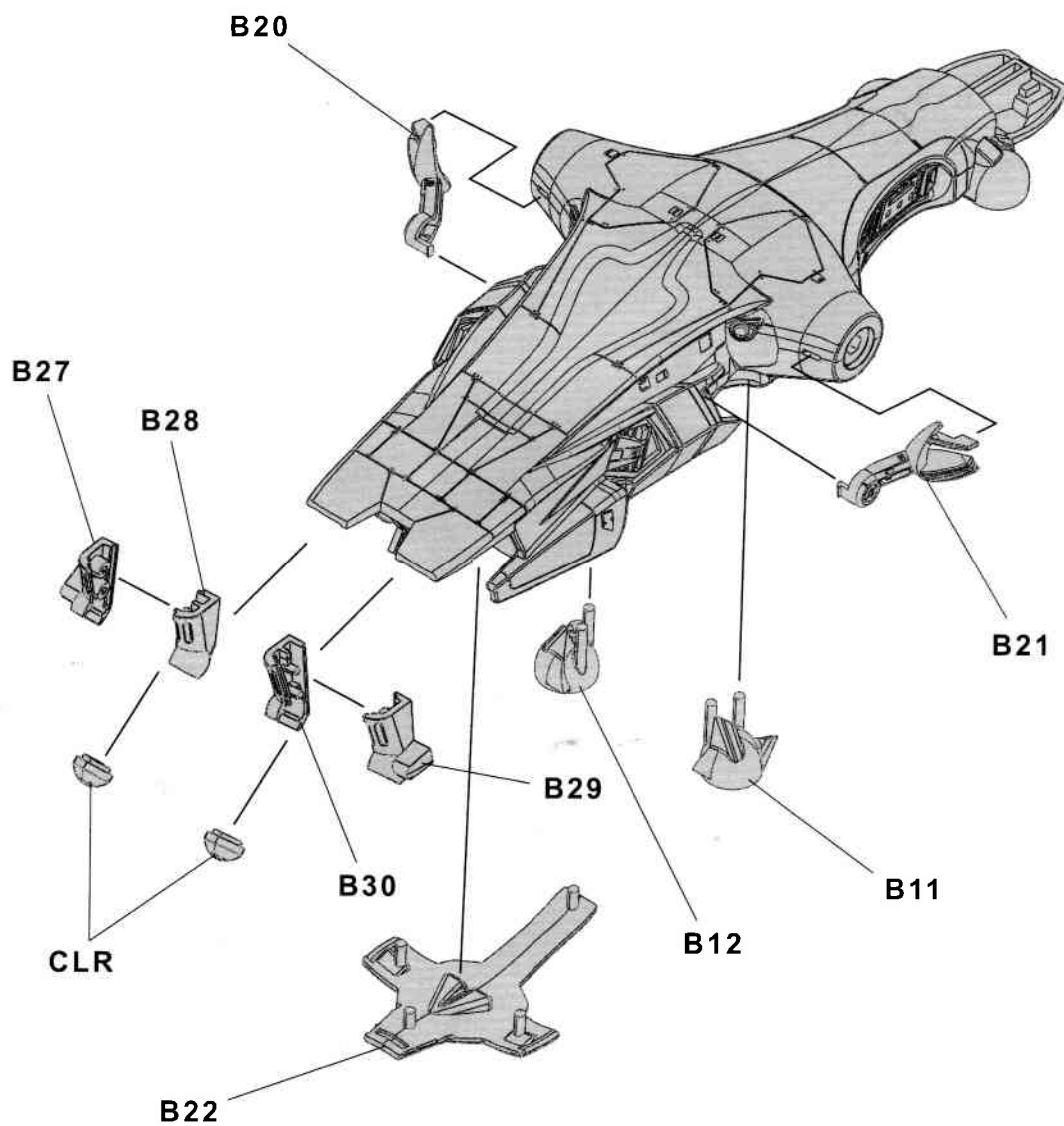


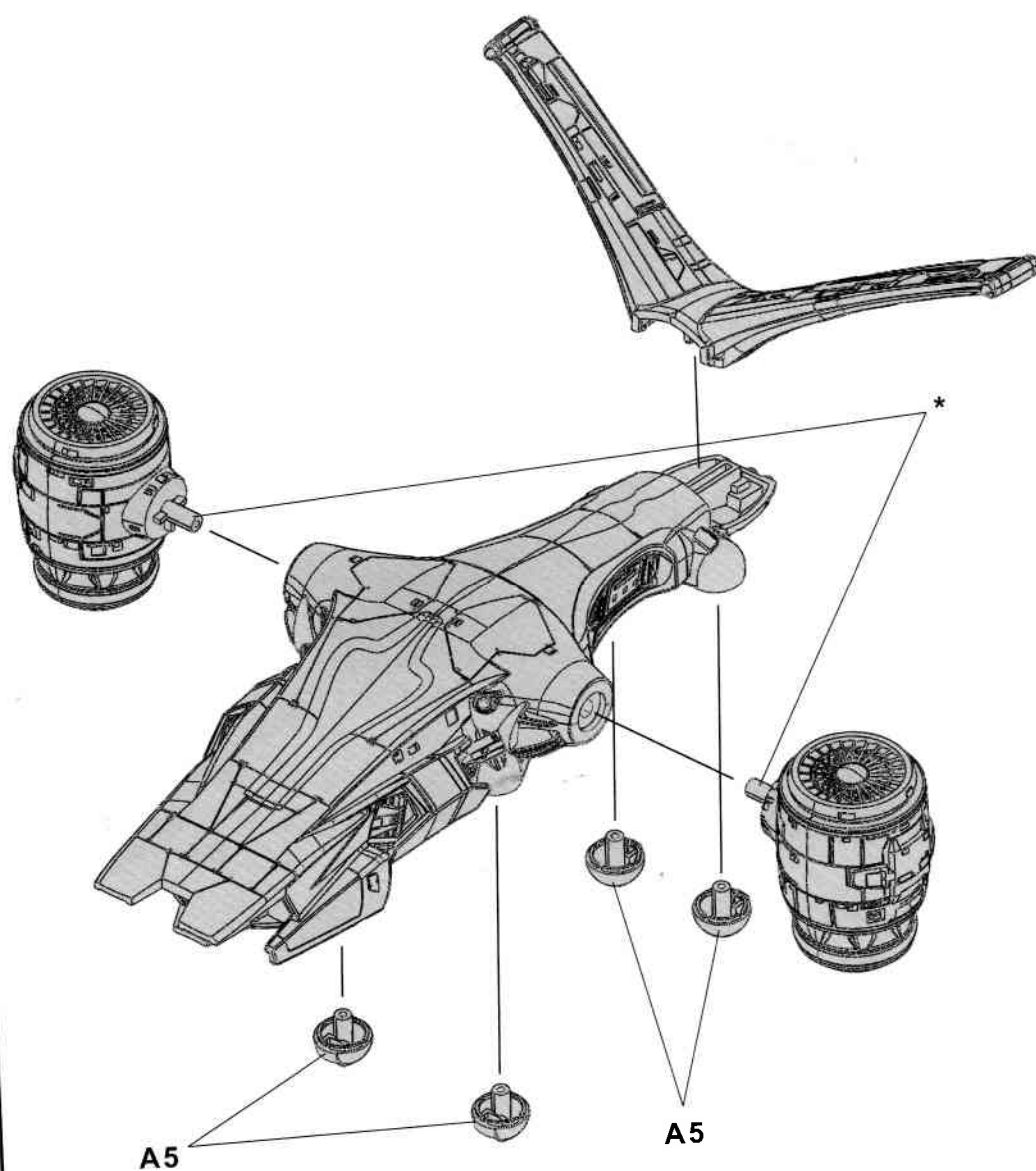




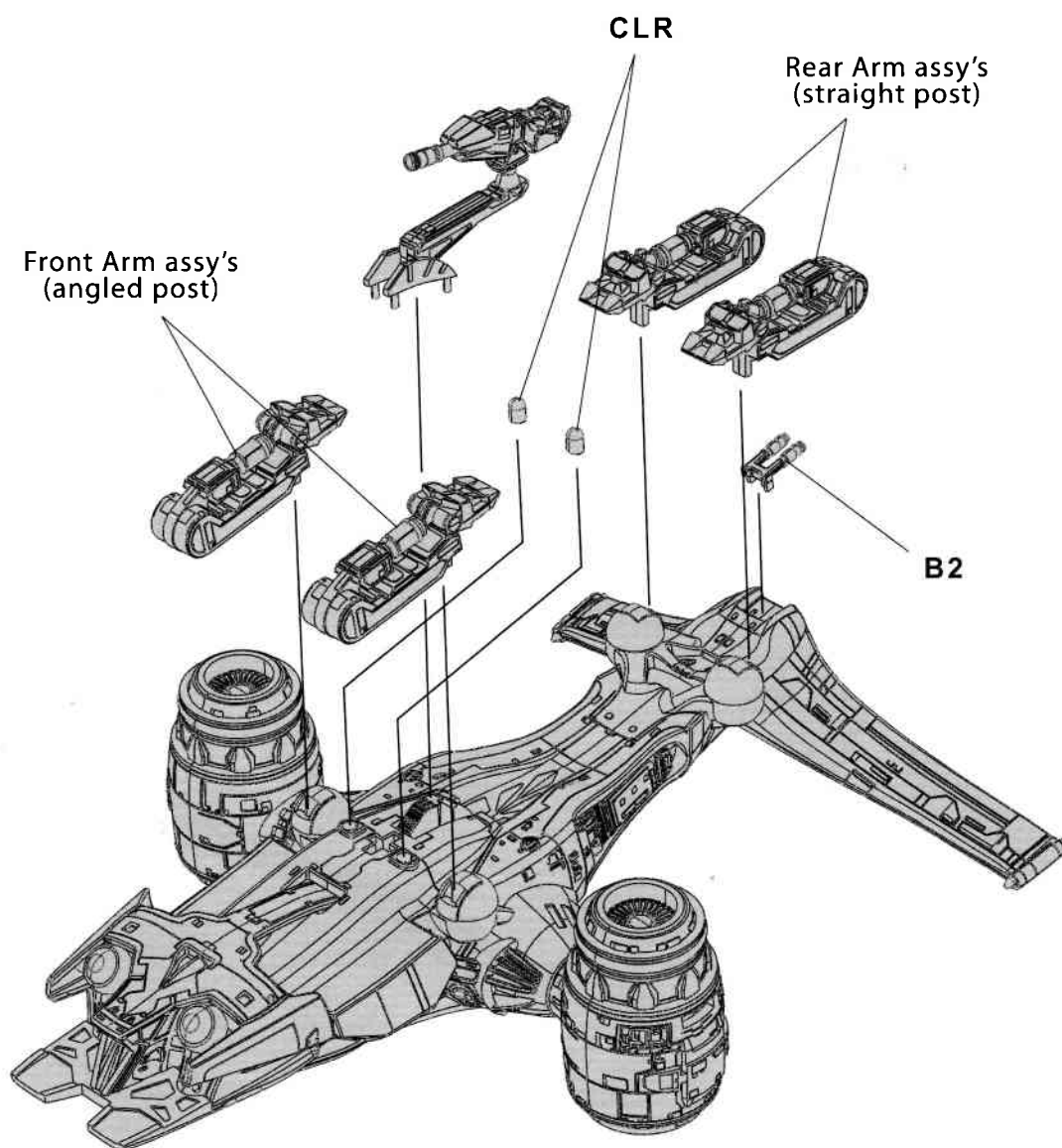


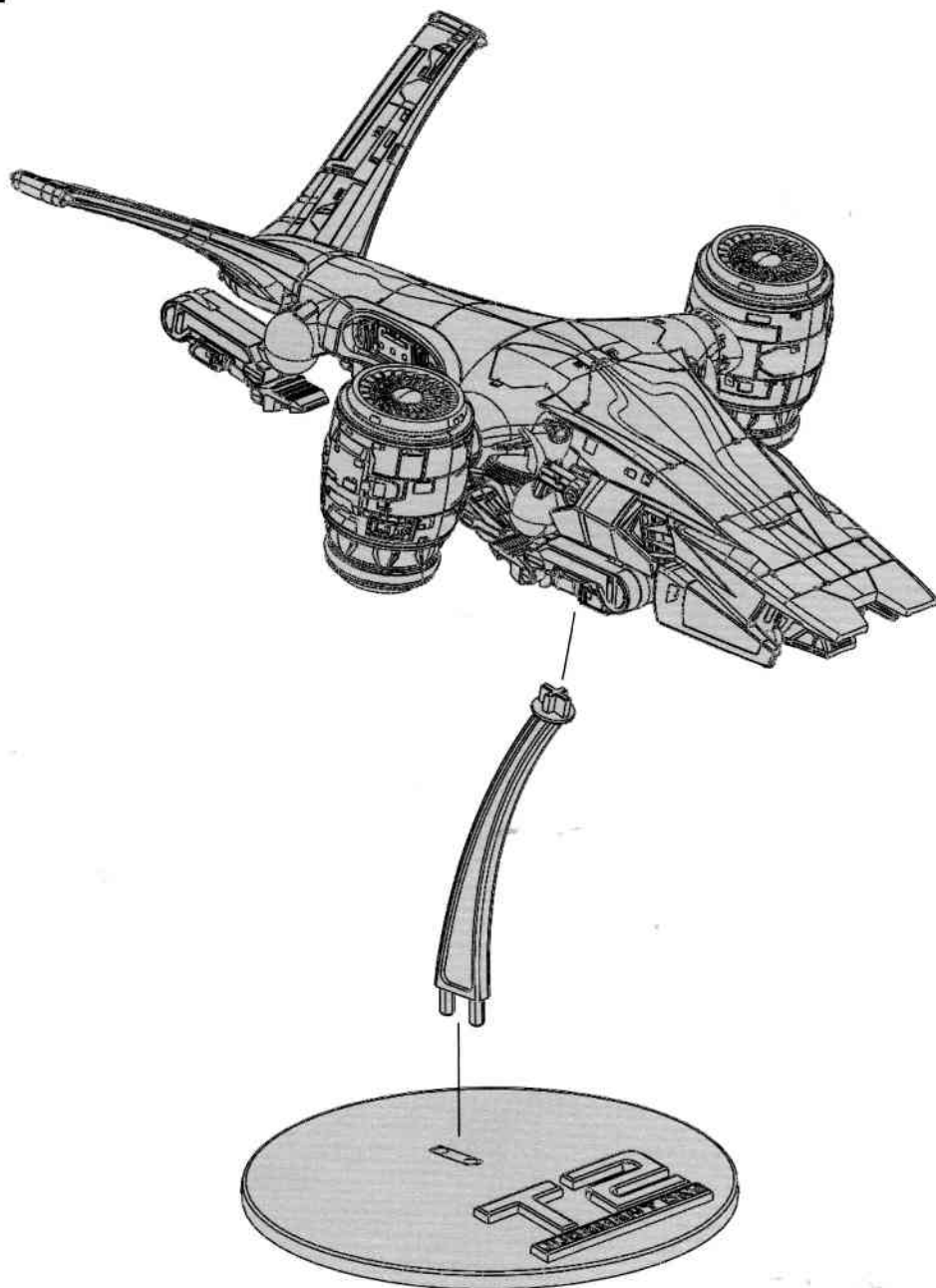
* Do not glue insert. Allows engine pods to rotate (2X places)





* Glue engine pod posts to inserts only. Allows engine pods to rotate (2X places)





PAINTING GUIDE

To get a really nice finish, make sure you use quality hobby paints and brushes. Take good care of your brushes and clean them well after every time you use them and they will last a long time. Before you paint, be sure to lay down some newspaper in the area you plan on working.

Kit parts are molded in ABS (opaque) and Polystyrene (clear) plastics, we recommend using : TAMIYA Extra Thin Cement, MODELMASTER Liquid Cement For Plastic Models (#8872C), or a Cyanoacrylate adhesive for gluing opaque parts together. For clear parts we recommend: Testors Clear Parts Cement or a standard White glue to avoid fogging of parts. Do not use any Methyl Ethyl Ketone based glues as they do not work with ABS plastics. Always use extreme caution when using hobby tools.

Paint Color Chart

| | |
|----|---------------|
| P1 | Chrome Silver |
| P2 | Light Grey |
| P3 | Dark Grey |
| P4 | Flat Black |
| P5 | Clear Red |
| P6 | Clear Blue |
| P7 | Ivory White |

